

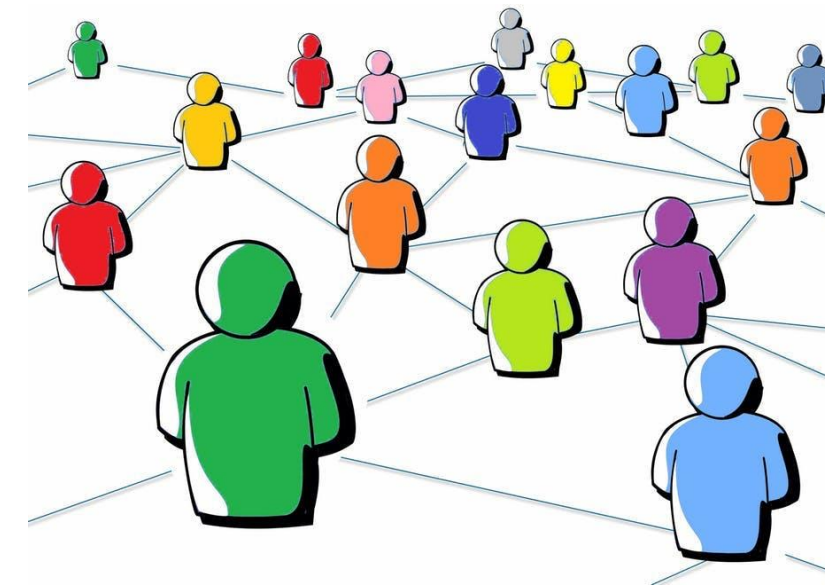


Place Based Social Network Analysis



BACKGROUND

Social networks (the individuals and the relationships among them) are an **important component of children and families' environments**



Disparities in social networks exist and may reinforce disparities in child health and well-being

We Want To Learn!

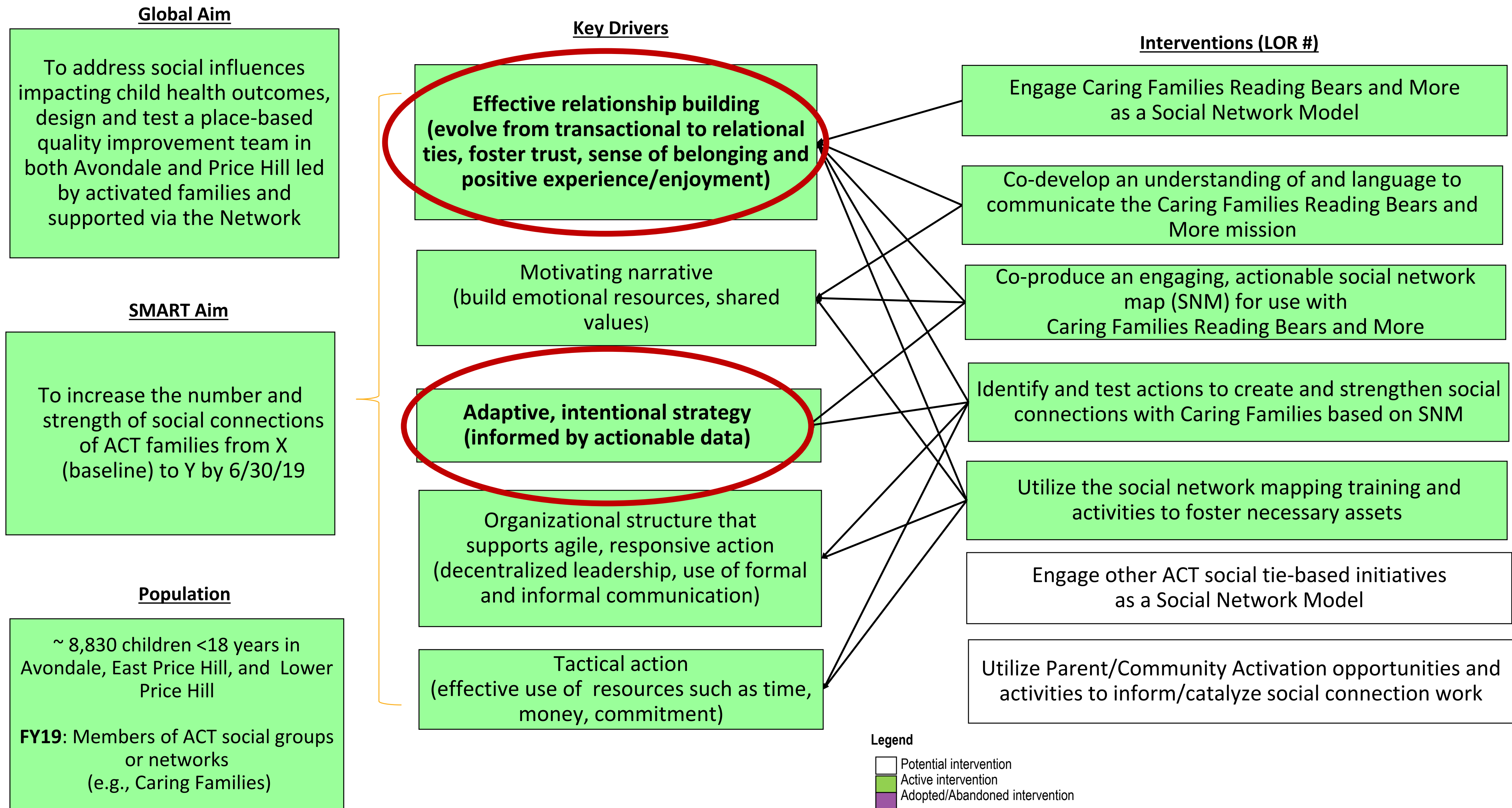
How to strengthen, grow, and interact in a social network to improve child health and well-being



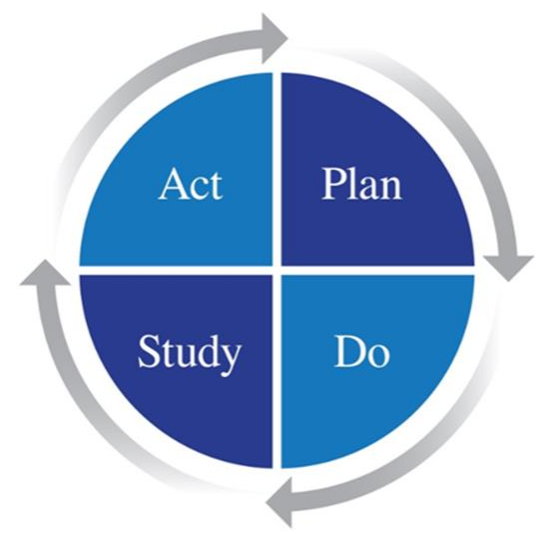
SOCIAL CONNECTEDNESS Key Driver Diagram (KDD)

Project Leader(s): Carley Riley

Revision Date: 2/5/2019 (v6)

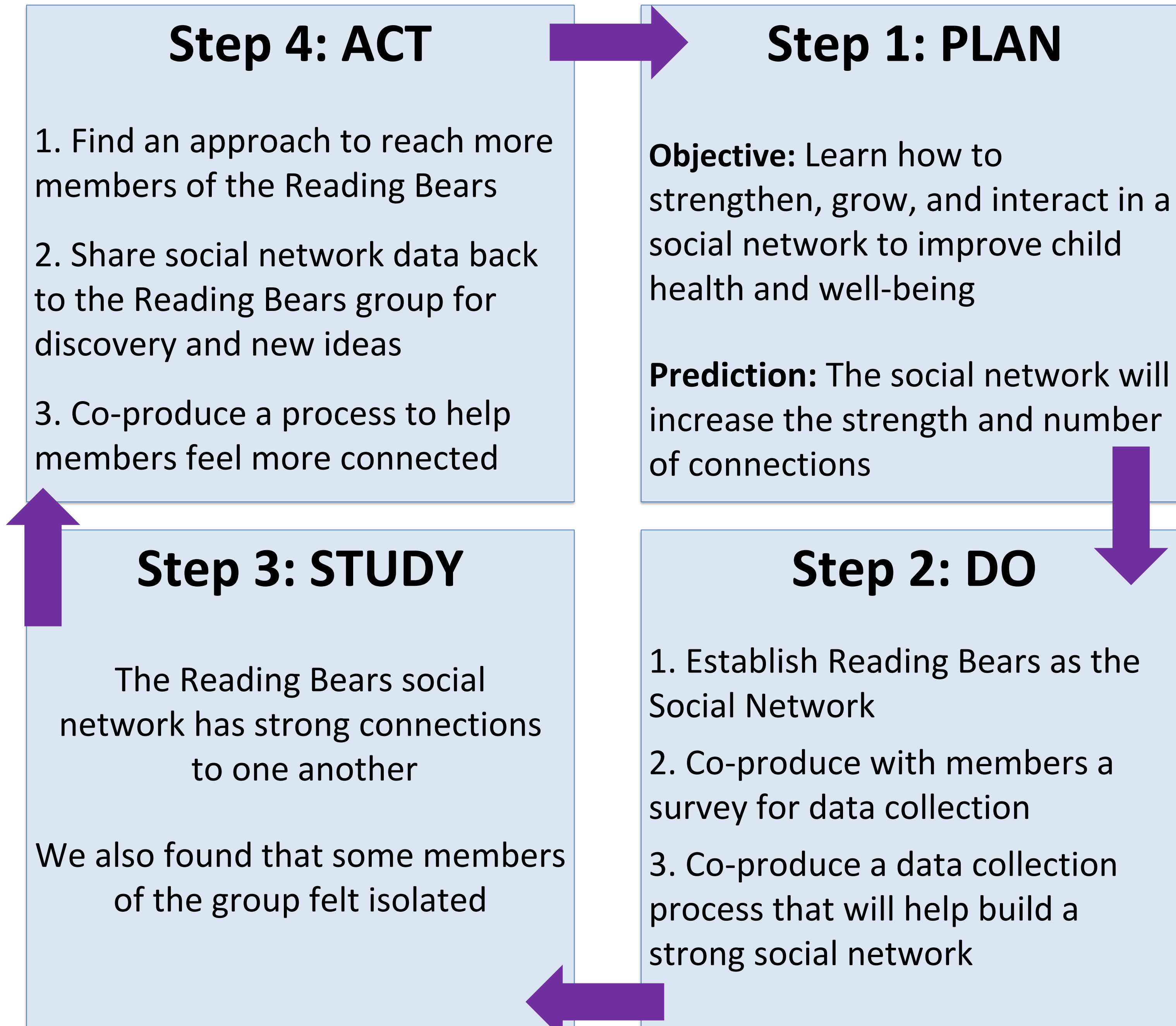


Note: LOR # = Level of Reliability Number, e.g., LOR 1



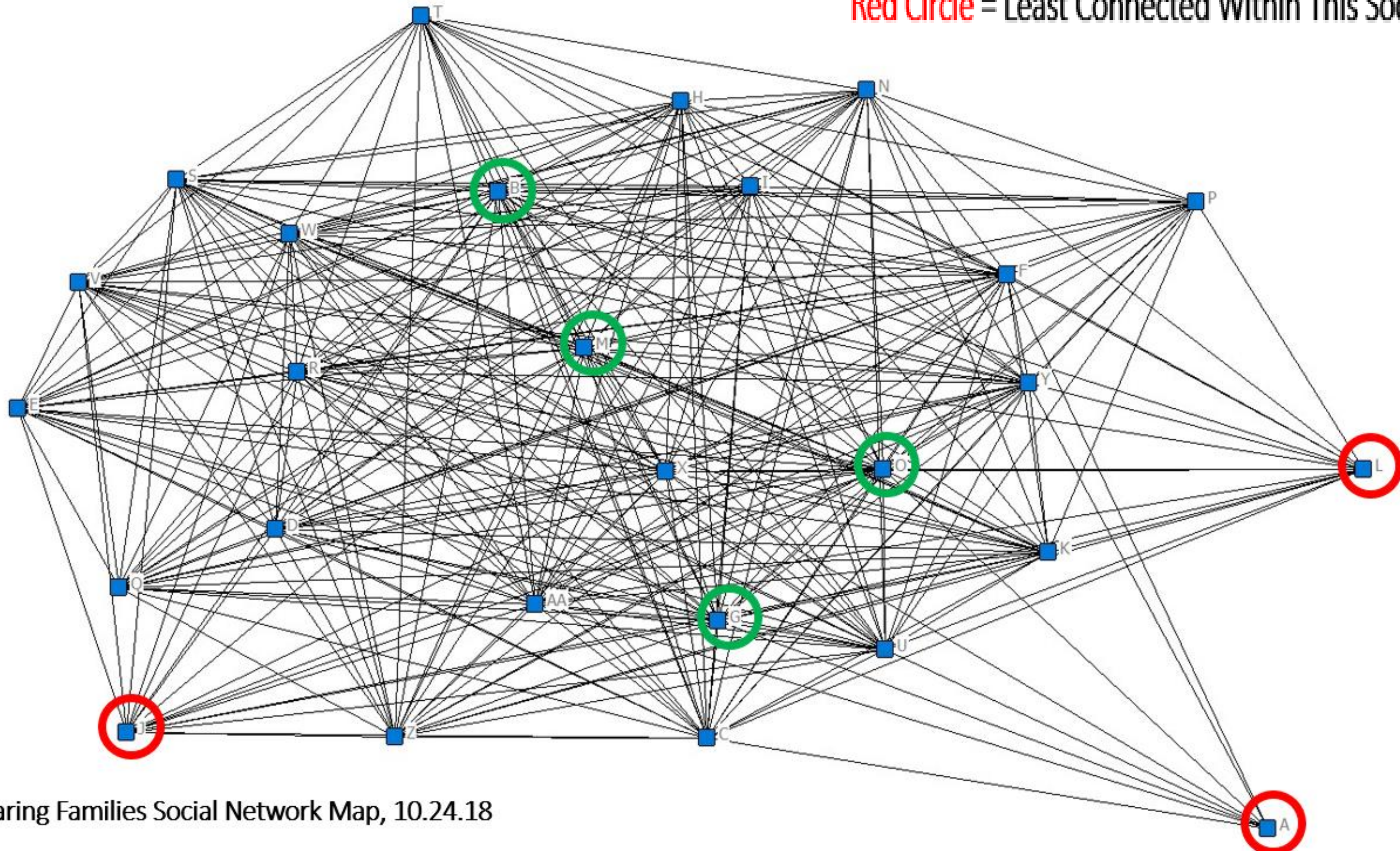
LEARNING CYCLES

- ✓ 3rd data collection cycle
- ✓ Building a comparison data bank
- ✓ Selecting a new social network



RESULTS

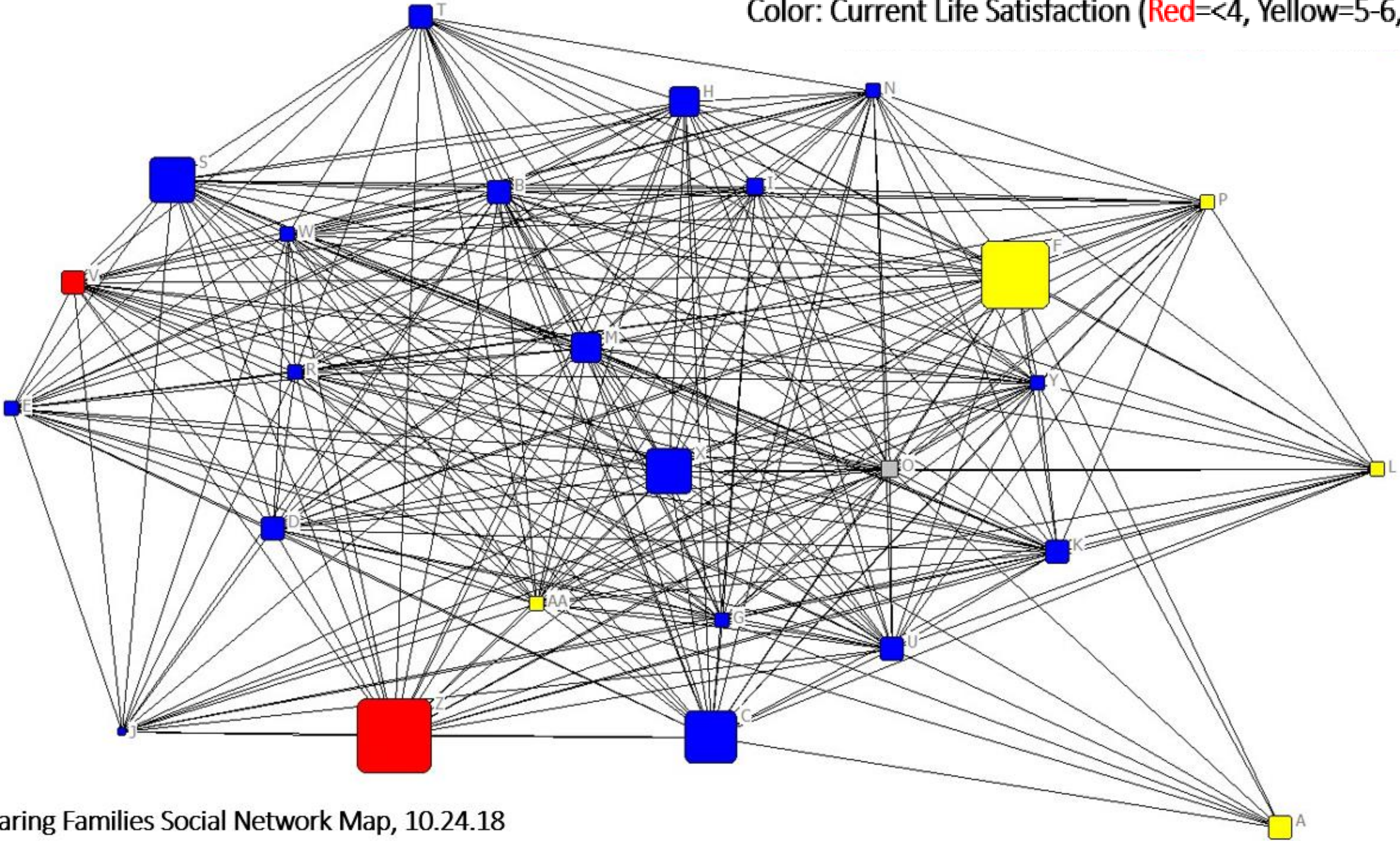
Green Circle = Most Connected Within This Social Network
Red Circle = Least Connected Within This Social Network



Caring Families Social Network Map, 10.24.18

RESULTS

Size: Number of Children Care For Regularly (Smallest=1, Largest=11)
Color: Current Life Satisfaction (Red=<4, Yellow=5-6, Blue=>7)



Caring Families Social Network Map, 10.24.18

MOST PROUD



The Caring Families Reading Bears and More Group has realized the **benefits of social networks:**

- Special attention to members who feel isolated
- Community organizing is happening!
- Focused on improving child well-being - specifically literacy

GREATEST CHALLENGE



- Building trust and commitment to activate community organizing
- Introducing new concepts and activities of social network analysis

“Want to learn more
about
Social Networks?”



Carley Riley

carley.riley@cchmc.org

Kristen Gasperetti kristen.gasperetti@cchmc.org

Allison Parsons allison.parsons@cchmc.org

Kate Rich katherine.rich@cchmc.org

Connie Stewart constance.stewart@cchmc.org

Kirsten Zook kirsten.zook@cchmc.org

