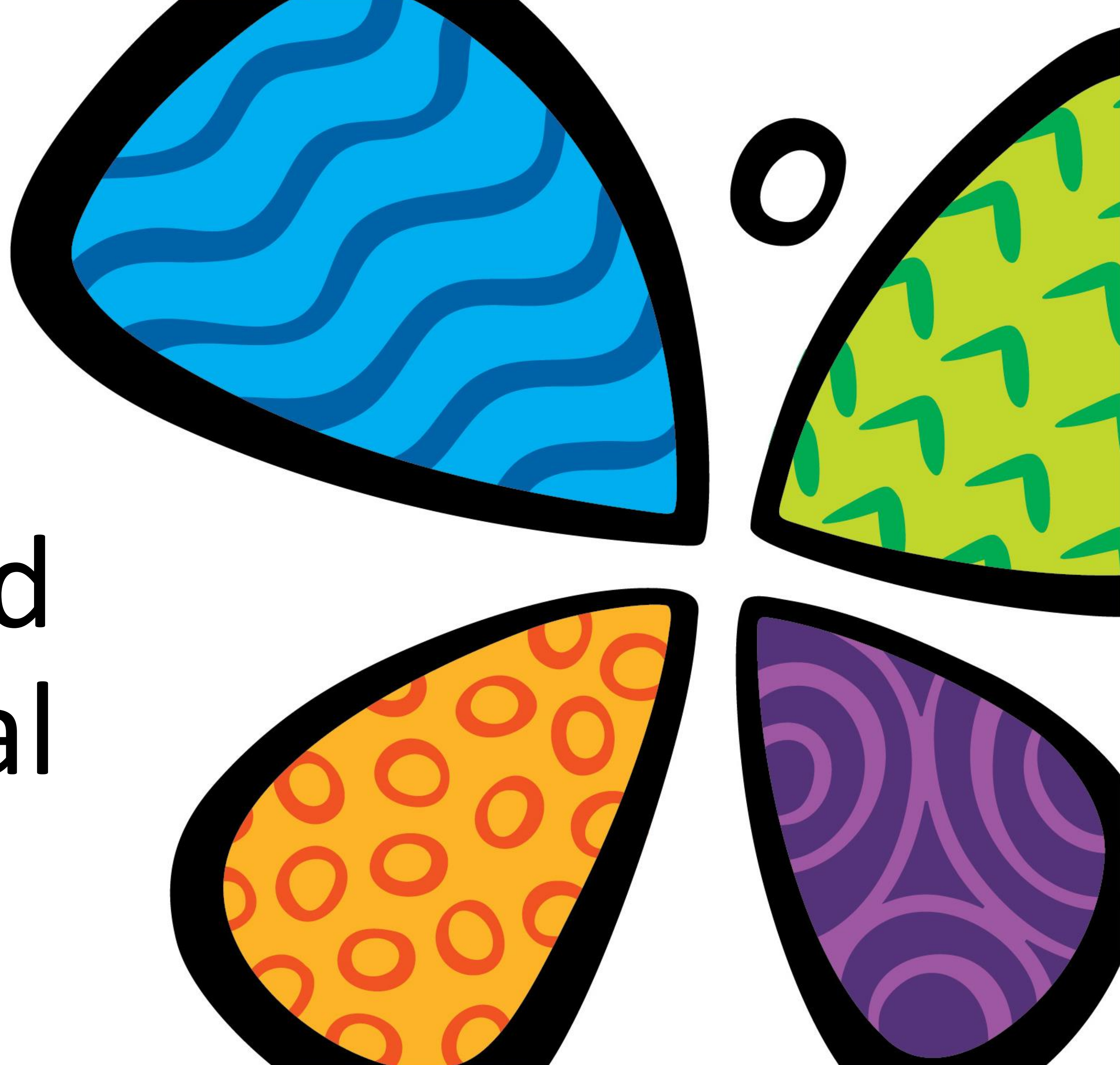




Integrated Behavioral Health

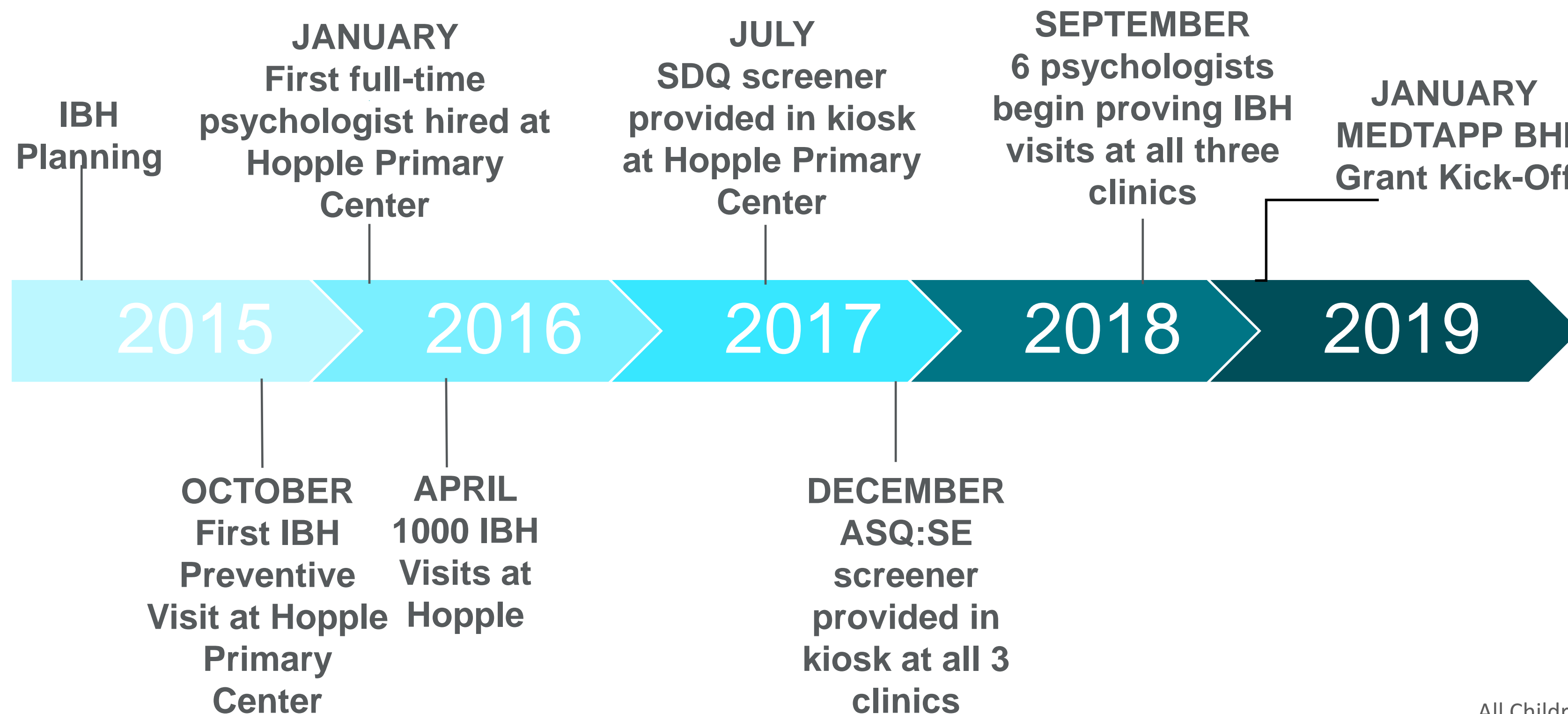


BACKGROUND



Integrate behavioral health into primary pediatric care to promote optimal physical, behavioral, social and emotional health of children.

CCHMC's Integrated Behavioral Health Journey



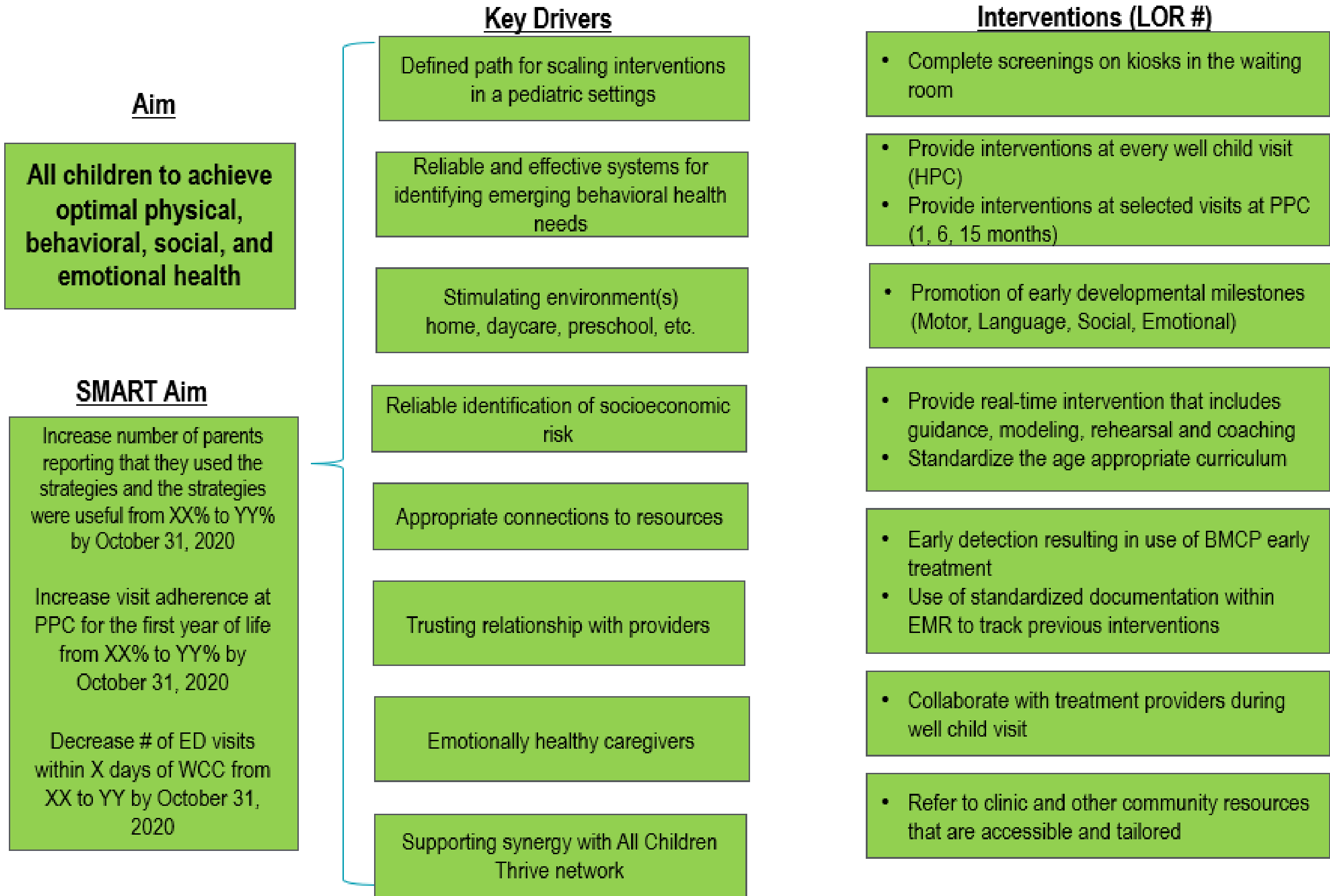
THEORY



Integrated Behavioral Health Key Driver Diagram (KDD)

Project Leader(s): Stark, Ammerman, McClure

Revision Date: 04/16/2019 (v6)



WHAT IS IBH?



Focus

- Development promotion
- Preschool/school readiness/enrollment
- Feeding issues
- Adherence
- Sibling transitions/ relationships
- Emotional regulation
- Immunization schedule adherence



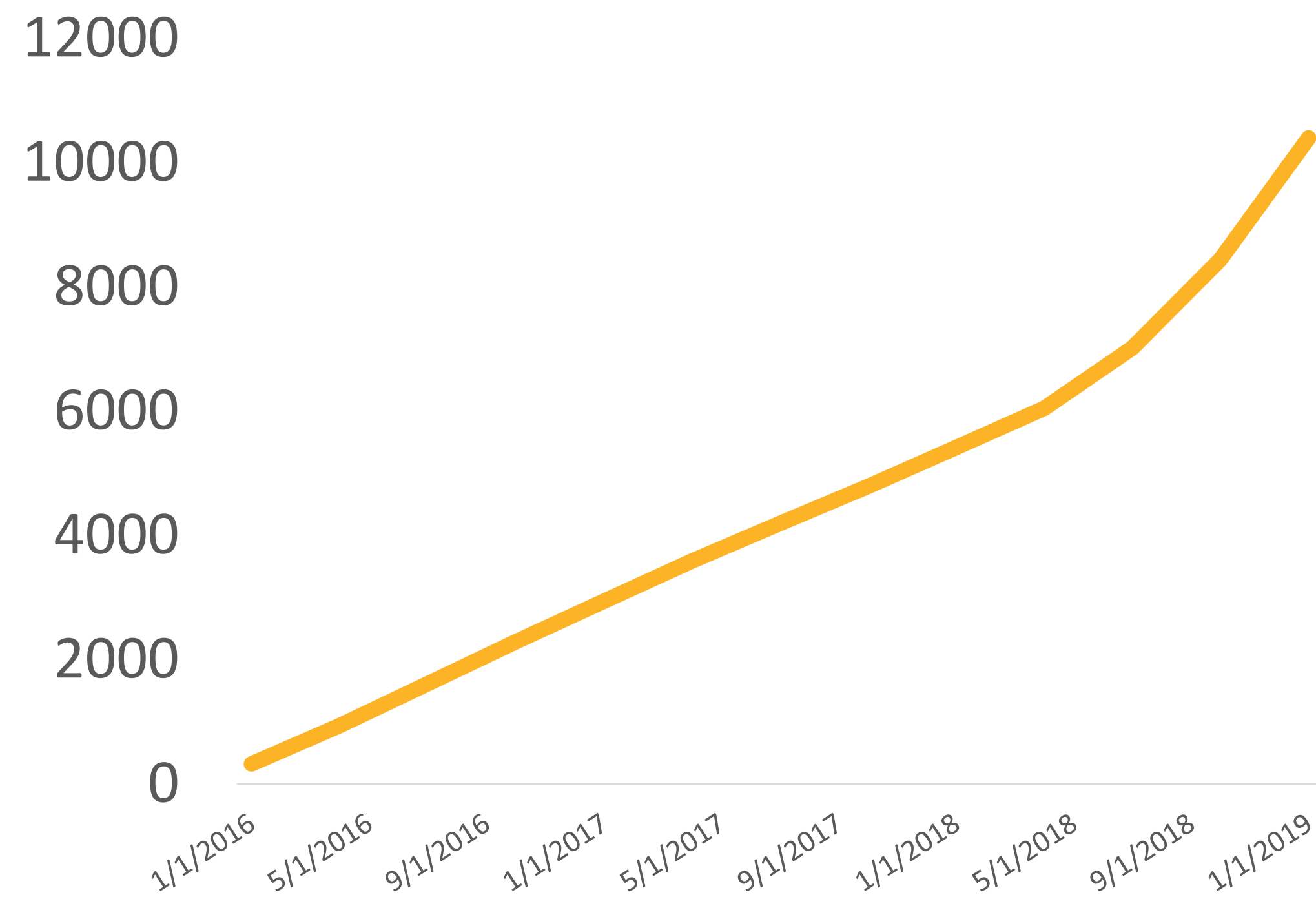
Strategies

- Infant Mental Health
 - focus on the caregiver-child relationship
 - promoting responsiveness to cues
 - strategies to promote development
- Motivational interviewing
 - enhancing motivation for health behavior change
 - collaborative decision-making
- Behavior Therapy
 - positive parenting strategies

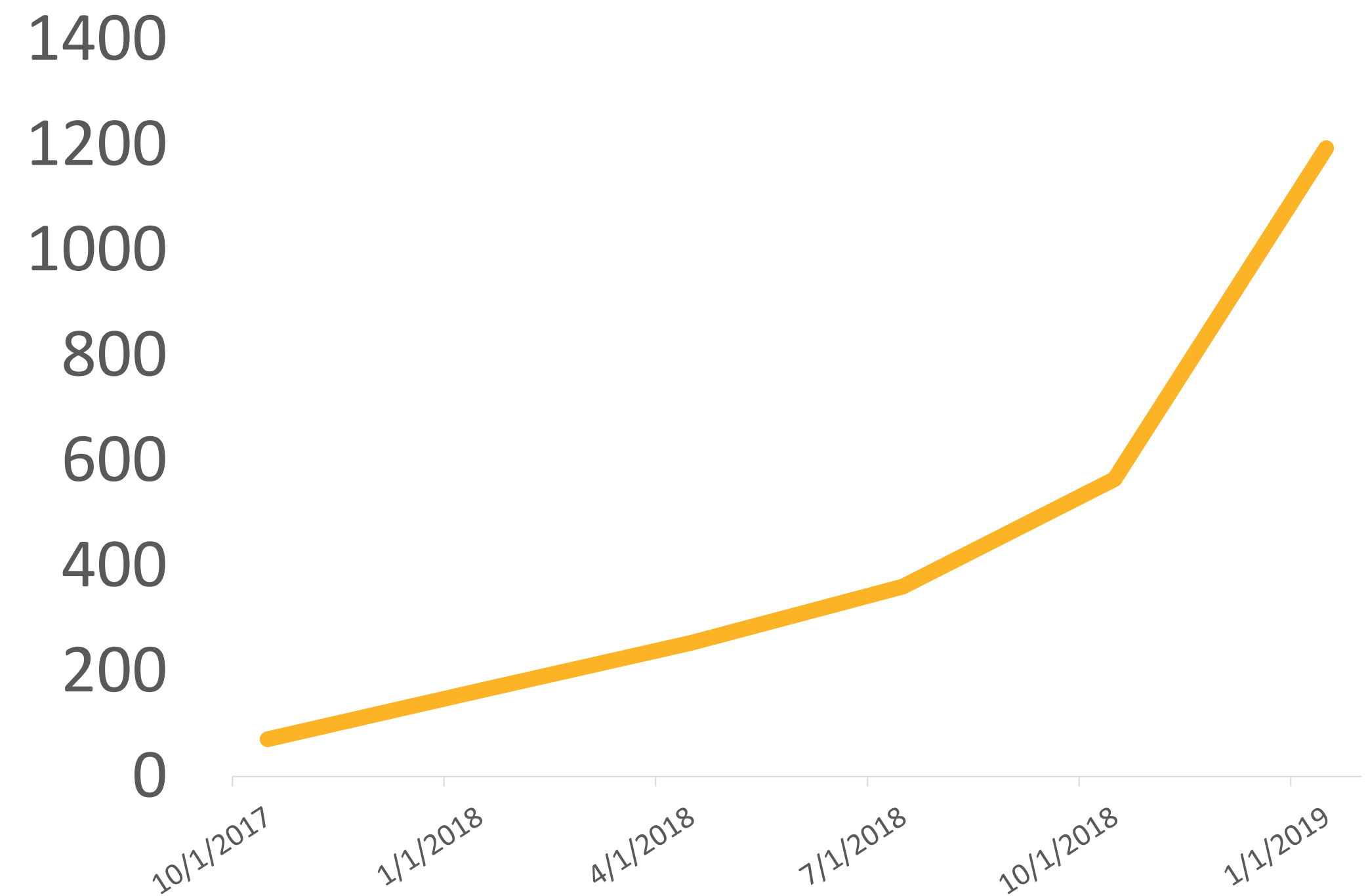
RESULTS



Cumulative Patient Visits with IBH



Cumulative Emotional & Behavioral Screeners Complete



MOST PROUD & WHY



Providing social, emotional and behavioral health support to families who may not have had the opportunity outside of primary care



GREATEST CHALLENGE



Please Leave a Comment

How can we best connect or partner our work with your team or projects?

For more information
contact: Cynthia.Zion@cchmc.org



TEAM MEMBERS

*Hopple Street Neighborhood
Health Clinic
Primary Pediatric Care Clinic
Fairfield Primary Care Clinic
Behavioral Medicine & Clinical
Psychology*

